

# 39 x Sample Cabinets & Gloveboxes

Client: URENCO

## Aims and objectives

The project objective was to design, manufacture and deliver, 39 sample gloveboxes, which would provide a containment into which sample bottles could be placed, providing spillage and splash protection. Within the scope of 39 containment gloveboxes there were 4 variants. In all cases the process, pipework inside the containment boundary acted as the primary containment.



## Containment

Cyclife EDF Group - Subsidiaries



# 01

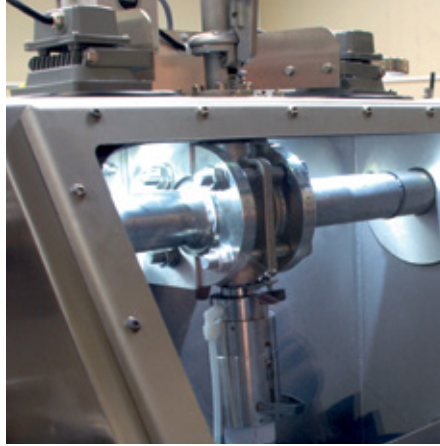
## The client

URENCO operates in a pivotal area of the nuclear fuel supply chain which ends with the sustainable generation of electricity for consumers around the world. The supply chain itself can be subdivided into four key processes: mining, conversion, enrichment, and fabrication.

URENCO uses world-leading centrifuge technology to provide the uranium enrichment services our customers need to generate low carbon nuclear energy.

# 02

## Project overview



Aquila was awarded the contract to design, manufacture, assembly and test, 39 containment systems of 4 variants. The award process was based on a thorough understanding of the functional specification,

together with 'fit for purpose' engineered solutions to a demanding quality assurance specification. The Aquila proposal included a fully engineered 3D model covering solutions for:

- Internal box viewing
- Internal reach for every sample value location
- Material selection for 'wetted parts'
- Full material selection for carcase and seal
- Access-door solutions
- All penetration for ventilation
- Lighting solution

# 03



## Summary

### Summary

Having decades of experience of containment technology, the Aquila team was able to offer a highly competitive solution to a functional specification provided by the client.

The input at the tendering stage included the development of a 3D model which enabled the commercial team to fully specify and price the solution based on our clients functional specification.



## Contact us

T: +44 (0) 1962 717 000  
E: [info@cyclifeaquila.com](mailto:info@cyclifeaquila.com)

[www.cyclifeaquila.com](http://www.cyclifeaquila.com)

